

# Seattle Youth Violence Prevention Initiative



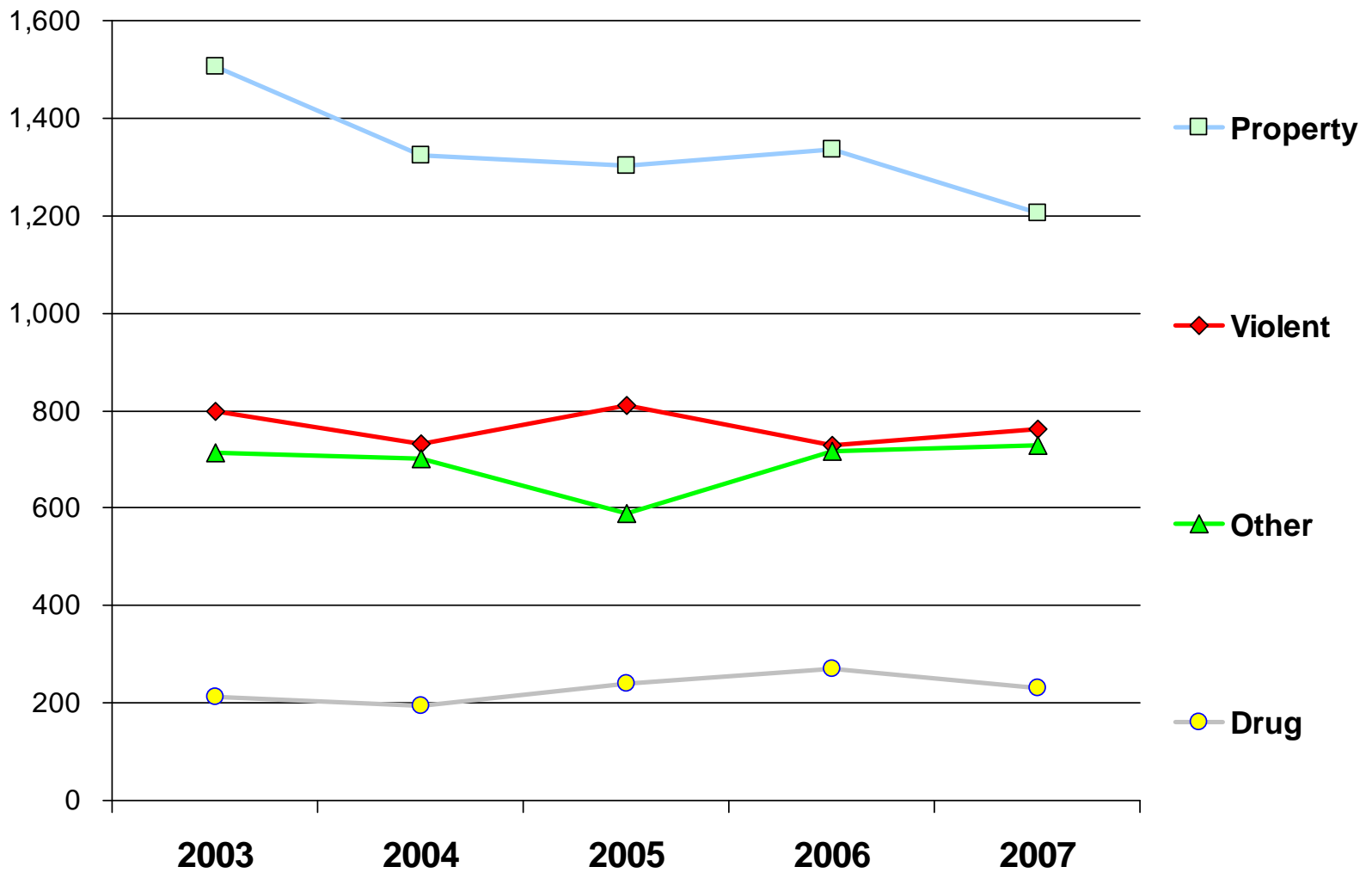
OMNA on Tour  
*Diverse Youth In Transition*  
September 26, 2009



# Background

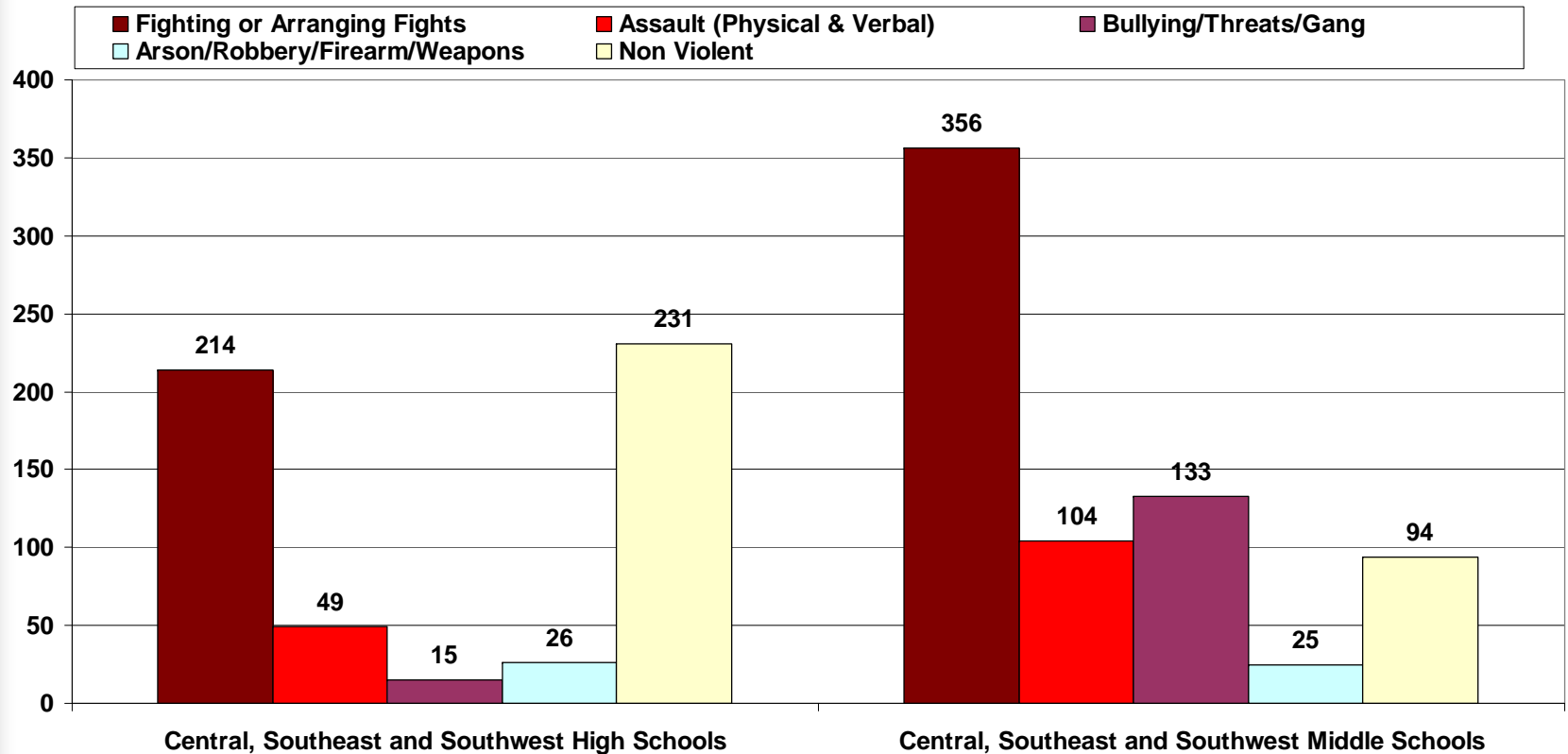
- Initiative was developed in response to:
  - Shooting deaths of youth in 2008
  - Persistence of court referrals for violent offenses
  - High rate of suspensions in Middle Schools for violence related incidents
- Proposed an intervention model rather than prevention
  - City already invests about \$62 million in youth services
  - SDRG work identifies risk characteristics amenable to City intervention

# Juvenile Court Referrals – Seattle Residents



# Number of Incidents Resulting in Suspensions or Expulsions

(Selected High and Middle Schools, 2006-2007 SY)





# Primary Populations

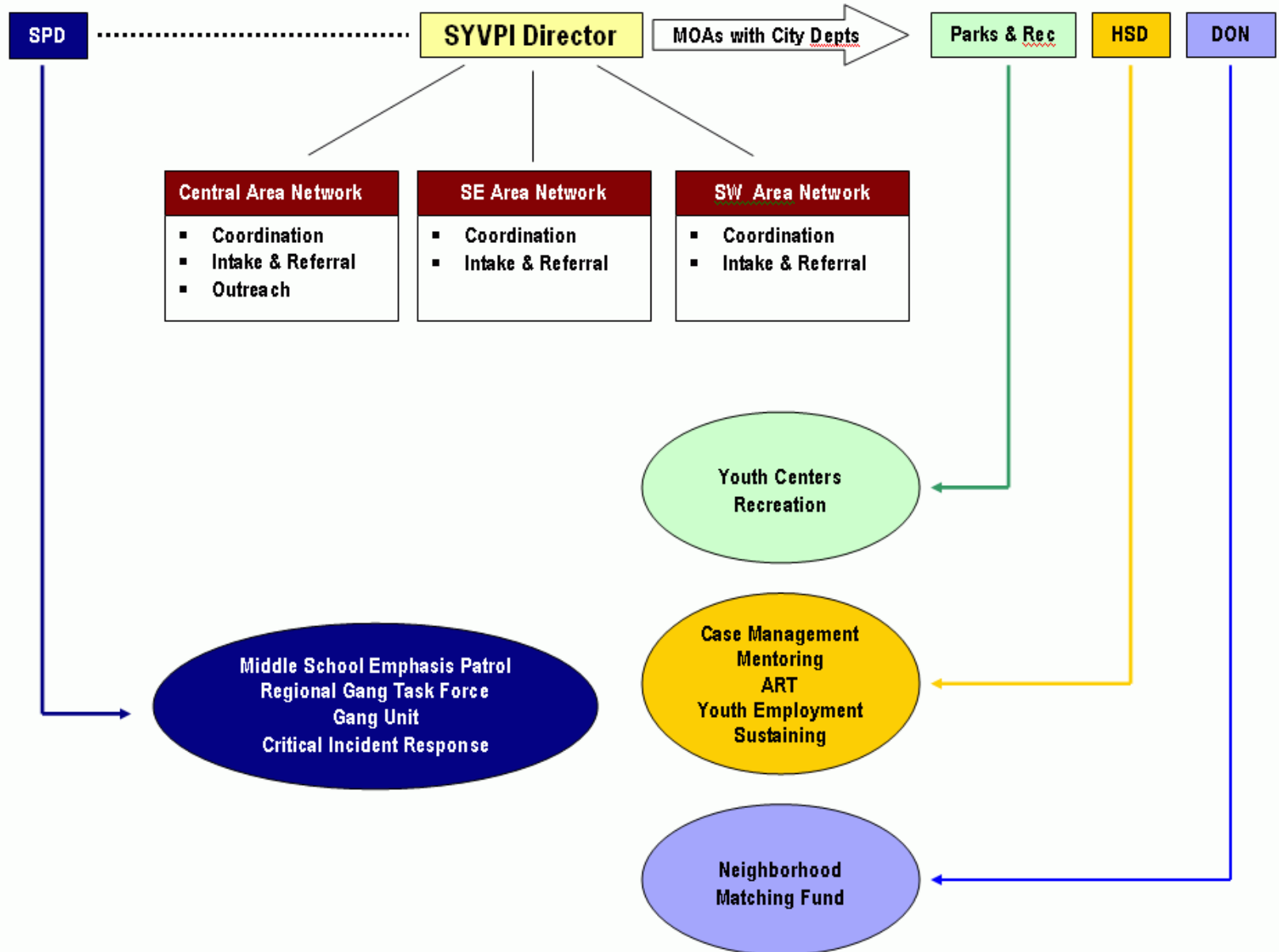
1. Youth convicted multiple times and released from supervision by state or county or who are under minimal supervision, and are considered at continued risk to re-offend.
2. Youth arrested for crimes that do not meet the juvenile detention intake criteria and are released back into the community.
3. Middle school youth at risk of multiple suspensions or chronic truancy.
4. Youth and their associates who are victims of violence and may seek retaliation.



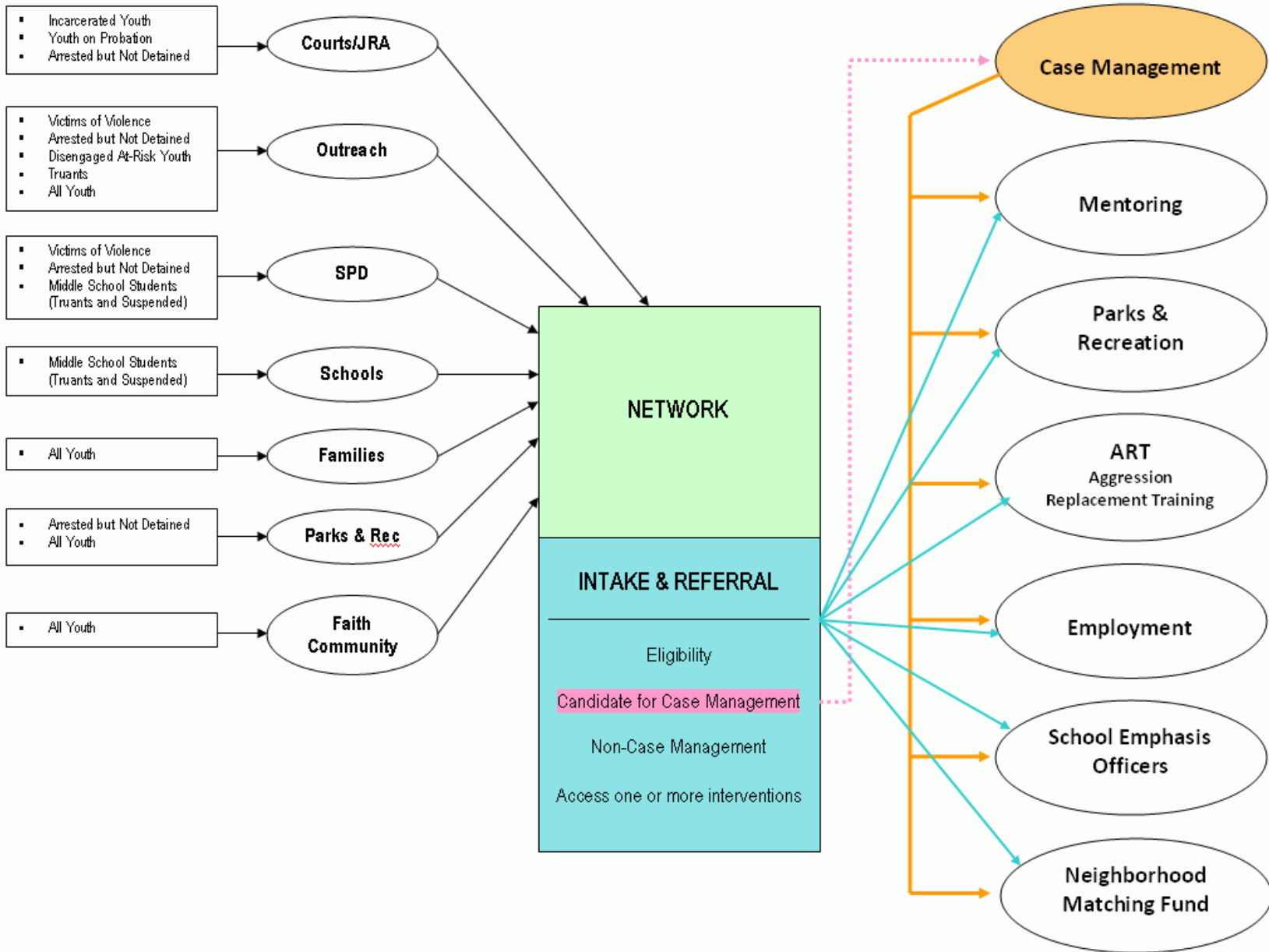
# Seattle Initiative

- City of Seattle's Initiative is a blend of multiple strategies.
  - Community organization
  - Strategic law enforcement
  - Provision of social services and employment opportunities
- Budgeted at \$8.0 million over biennium

# Organizational Structure



# Initiative Overview





# Initiative Outcomes

- The intended outcomes of the SYVPI are:
  - A 50% reduction in court referrals for juvenile crimes against persons committed by youth residing in the Central Area, Southeast Area, and Southwest Area Networks, and
  - A 50% reduction in the number of suspensions/ expulsions due to violence-related incidents at Denny, Aki Kurose, Madrona K-8, Madison, Mercer, and Washington Middle Schools.



# Outcomes & Indicators

- Outcomes are 50% reduction in court referrals and suspensions/expulsions in the networks.
- Indicators monitor network and investment areas' progress toward Initiative outcomes.
- Each investment area includes specific indicators.
- Indicators measure the success of each investment area.
- Indicators are observed routinely to ensure youth are making progress toward reducing their likelihood to engage in violence.
- If targets are not met, course corrections will be made to improve or change investment strategies.



# Network Indicators

- Number of youth/families completing intake screening (as evidenced by youth agreeing to and signing an accountability agreement).
- Number of youth/families engaging in services recommended in intake screening within two weeks of signing off.
- Number of youth still engaged in network-recommended services at three months.
- Number of youth achieving goals established in plan at three months.
- Number of youth engaged in recommended services for one year without sanctions for violent behavior.



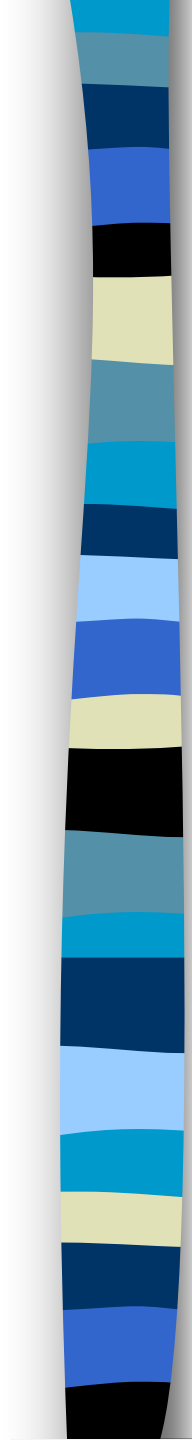
# Examples of Investment Area Indicators

- Aggression Replacement Training
  - Youth attend 70% of ART training classes
  - Youth reduce violent behavior in schools
  - Youth increase positive behaviors and moral reasoning
- Mentoring
  - Matches spend 2 hours together per week
  - Matches last 3 months
  - Matches last 12 months



# What Makes These Partnerships Successful?

- Networks are accountable for outcomes and therefore are invested in indicators
- Investment areas serve networks
- Networks leverage community resources
- Shared data among all parties
- Course corrections



## How is this Initiative different from previous strategies and why will it yield results?

- Community and youth driven
- Collaborative approach
- Integrates law enforcement with the broader strategy
- Outcome focused
- Leverages resources
- Driven by evidence-based strategies
- Links data system for multiple uses
  - Direct case management
  - Performance assessment
  - Outcomes and evaluation
- Regular reporting to Council and the public



# Current Status

- Central Area Network - Contracted February 2009 with Urban League
- Southwest Area Network – Contracted with Southwest Youth and Family Services
- Southeast Area Network – Contracted with a consortium of Rainier Vista Boys and Girls Club, Therapeutic Health Services, Atlantic Street Center, and the Center for Career Alternatives



# Current Status Continued

- Outreach workers coordinated by Urban League for all three Networks
- School Emphasis Officers assigned to four Middle Schools
- Case Management in implementation
- Mentoring and Aggression Replacement Training recruiting participants
- Neighborhood Matching Fund grants awarded for new and sustained projects
- Summer employment for 200 Initiative youth with some year round internships.