

# What the System Does Well and What are Our Failures?

Presenter:

Karen Spoelman

King County Mental Health Chemical  
Abuse and Dependency Services  
Division

# What do we want for our Children?

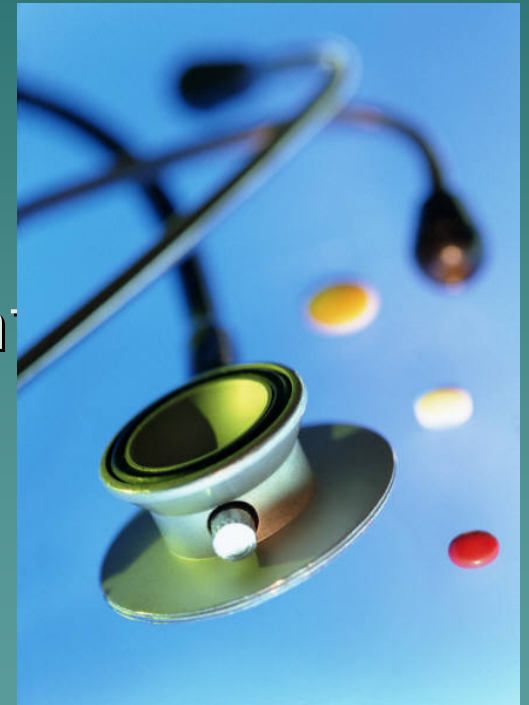
- ◆ A trajectory or passage that leads to success
  - A healthy birth and childhood
  - Success in school both academically and socially
  - The development of skills and abilities that lead to employment
  - Adult life where basic needs of housing, acquisition of food clothing etc are readily met
  - Desired adult life roles (e.g., friend, significant other, career, parent, citizen) are attained

# Trajectory or Passage Interruption

- ◆ A wide variety of issues can arise that interrupt the path to that desired future for children and youth
  - Health issues
  - Mental Health issues
  - Drug and alcohol use/abuse
  - Education challenges
  - Criminal Justice involvement

# Getting back to the Path

- ◆ Publicly funded Service Systems designed to help
  - Health Care
  - Mental Health
  - Substance Abuse Treatment
  - Education
  - Child Welfare
  - Employment Services



# Health Care

- ◆ Healthy Options

- Well Child Health Care Services

- ◆ Exams

- ◆ Vaccinations

- ◆ Referrals to needed behavioral health care services

- ◆ Basic Health Plan

# Behavioral Health Services

- ◆ Mental Health Treatment Services
  - Crisis intervention
  - Assessment/diagnosis & Treatment
- ◆ Substance Abuse Prevention and Treatment Services
  - Prevention focused on developing life skills and resiliency
  - Assessment and Treatment of drug and alcohol abuse

# WA State Regional Support Networks (RSNs)

RSN & County Boundaries Since September 2006



# Child Welfare Services

Responding to the needs of families experiencing challenges in providing care for their children

- ◆ Family Preservation
- ◆ Foster care
- ◆ At Risk Youth

# Education and Employment Services

## ◆ Schools

- Academic programs elementary through high school including specialized programs for children with special needs (e.g., special education, alternative schools, school to work transition programs)

## ◆ Work Source Programs

- Programs to assist with GED, work skills development and job placement

# What Works Well?

- ◆ For those that are eligible for publicly funded services, there is a wide array of supports and services in health, behavioral health, child welfare, education and employment services.
- ◆ In urban areas of the state a number of service providers that target and specialize in working with ethnically and culturally diverse populations are available.

# What works well? (continued)

- ◆ Services are designed to restore health, develop resiliency, and facilitate a return to the desired trajectory.
- ◆ There are new emphases on addressing disproportionality and promoting cultural competence

# What works well? (continued)

- ◆ The State of Washington has recognized the need to expand the public funding eligibility for children and youth.
- ◆ The State of Washington has implemented a process to bring parity for behavioral health services to health insurance programs.

# What Are Our Challenges and/or Failures

- ◆ The door to services are narrow (e.g., eligibility criteria)
- ◆ The doors often aren't easy to find.
- ◆ Services are sometimes seen as not relevant or welcoming.
- ◆ Staff providing services don't have all the tools, skills, and knowledge to help.

# What Are Our Challenges and/or Failures continued

- ◆ For transitioning youth eligibility requirements for services change midstream (most at age 18 years).
- ◆ We don't have enough capacity to address the need in a number of needed services (e.g., treatment, housing and supports, employment support).

# Hope for the Future

- ◆ Elected officials and policy makers have been increasingly aligning to address the needs of children, youth and their families.
- ◆ Families and youth are increasingly involved at all levels of planning, implementing and overseeing the services targeted to them.